

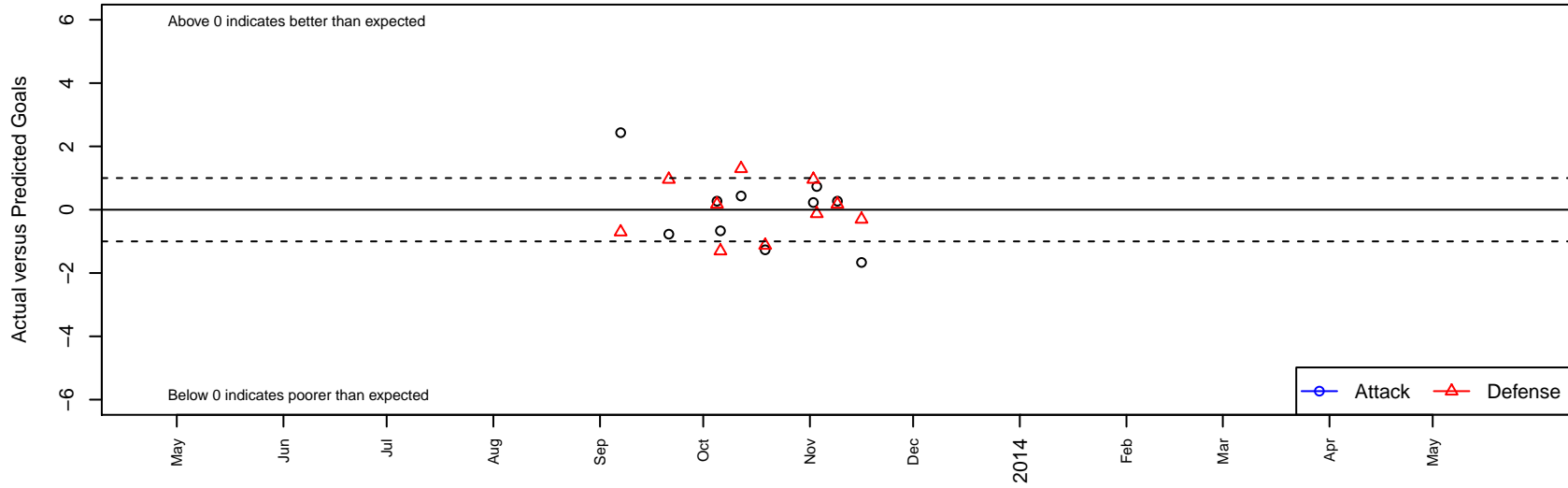
Diablo FC G01

, CAN
 G01 total strength=915
 attack=1.46 defense=1.52
 alt names used:

Venues played:
 NorCal Premier F11 – Region 3–4 U12



Diablo FC G01
 Dots are actual minus expected GF (blue circles) and GA (red triangles).
 Blue line is smoothed change in attack strength. Red is smoothed change in defense strength.



	date	home		away		venue	pred.home	pred.away
6575	2013-11-16	San Ramon 02 Azuri G01	1	Diablo FC G01	0	NorCal Premier F11 – Region 3-4 U12	0.70	1.67
6471	2013-11-09	Livermore Fusion SC Maroon G01	1	Diablo FC G01	2	NorCal Premier F11 – Region 3-4 U12	1.17	1.73
6419	2013-11-03	Diablo FC G01	2	EBU Bay Oaks Gold Bombers G01	1	NorCal Premier F11 – Region 3-4 U12	1.27	0.87
6329	2013-11-02	Diablo FC G01	1	Mustang Blast G01	0	NorCal Premier F11 – Region 3-4 U12	0.77	0.96
6015	2013-10-19	EBU Bay Oaks Gold Bombers G01	2	Diablo FC G01	0	NorCal Premier F11 – Region 3-4 U12	0.87	1.27
5854	2013-10-12	Diablo FC G01	2	ACC Mavericks Dynamite G01	0	NorCal Premier F11 – Region 3-4 U12	1.57	1.30
5780	2013-10-06	Diablo FC G01	1	San Ramon 02 Azuri G01	2	NorCal Premier F11 – Region 3-4 U12	1.67	0.70
5665	2013-10-05	Diablo FC G01	2	Livermore Fusion SC Maroon G01	1	NorCal Premier F11 – Region 3-4 U12	1.73	1.17
5360	2013-09-21	Mustang Blast G01	0	Diablo FC G01	0	NorCal Premier F11 – Region 3-4 U12	0.96	0.77
5041	2013-09-07	ACC Mavericks Dynamite G01	2	Diablo FC G01	4	NorCal Premier F11 – Region 3-4 U12	1.30	1.57